

To complement our primate research expertise, Altasciences provides sponsors with high-quality immunotoxicology protocols designed to identify systemic and/or local toxicity prior to initiation in human studies.

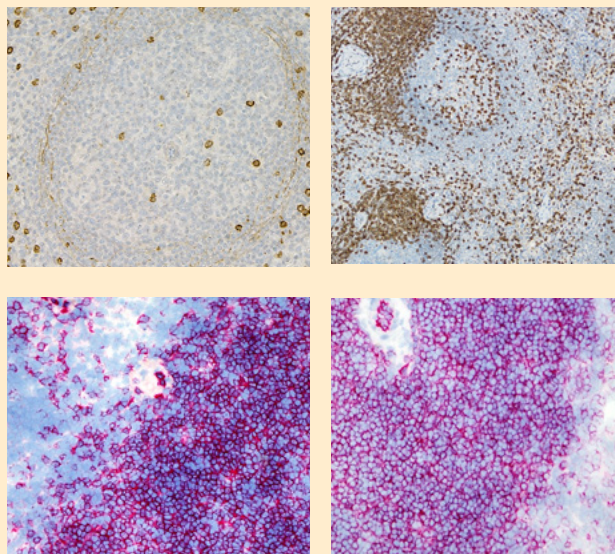
Our Pathology group has extensive experience in immunohistochemistry, and utilizes automated tools and techniques to help identify immunomodulation and toxicological effects.

Immunomodulation

Altasciences offer a wide array of markers:

- CD3
- CD4
- CD8
- CD14
- CD20
- CD31
- CD38
- CD54
- C3/C3b
- C3c
- C4d
- Caspase -3
- CFTR
- Collagen VII
- Dystrophin
- Elastin
- GFAP
- GFP
- Glucagon
- Insulin
- Ki67
- LAMB3
- NeuN
- SC5b-9
- Tyrosine Hydroxylase
- ATP2C1

Additionally, we can complete method development on many commercially available antibodies.



Musculoskeletal Pathology



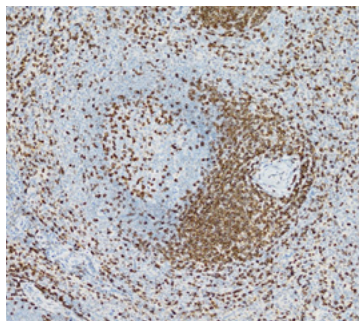
Neuropathology



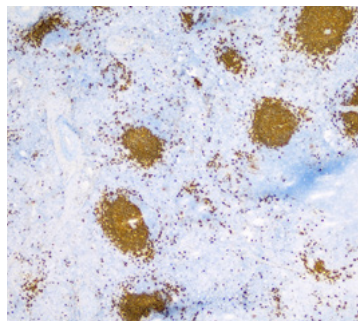
Related Areas of Interest

- General toxicology
- Specific toxicology
- Carcinogenicity
- Efficacy models

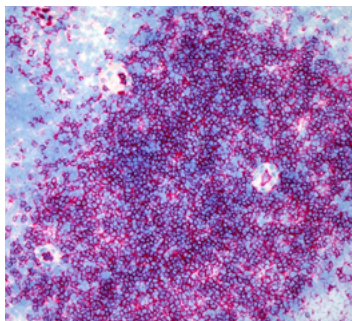
Immunophenotyping



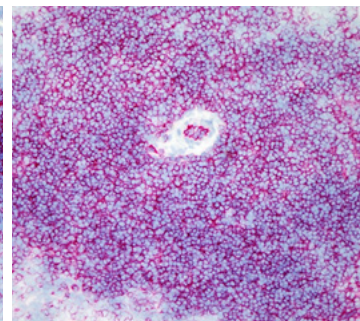
CD3



CD20

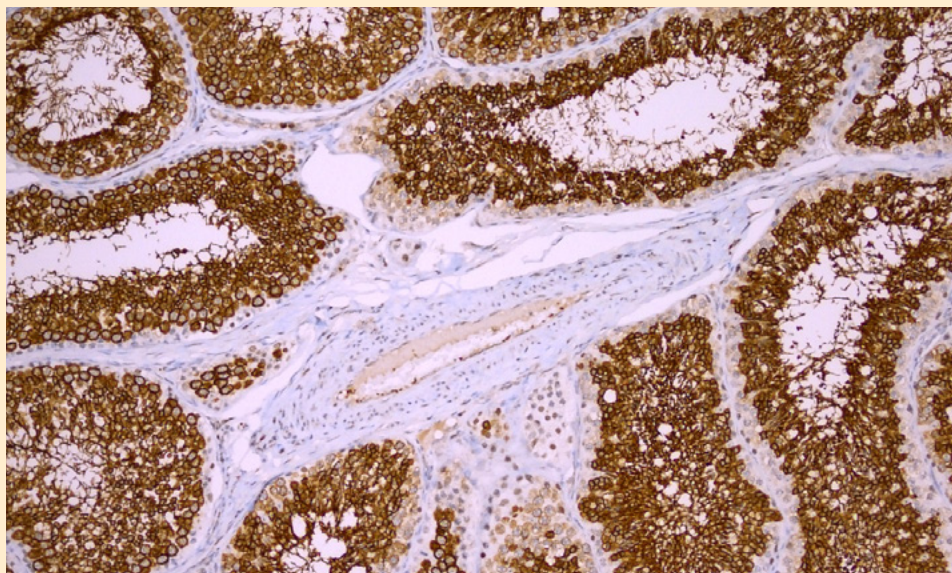


CD4



CD8

Nephrotoxicity



Growth Factors and Receptors Cell Adhesion Markers Hormones

Advantage

Pathology/Clinical Pathology

To support our Pathology Service Program, we offer:

- Full anatomic pathology services
- Clinical pathology
 - Clinical chemistry
 - Urinalysis
 - Hematology/coagulation
- Specialized staining
 - Immunohistochemistry (IHC)
- Historical database for control NHPs
 - Growing database and on-going monitoring for drift in terminology within and across studies

EXPERIENCE YOU CAN TRUST — Preclinical Drug Development

Multi-species expertise in NHP, canine, minipig, rabbit, rat and mouse

Efficacy models, safety pharmacology, exploratory and regulatory toxicology

Biologics, small molecules, oligonucleotides, vaccines, gene therapy

Custom model development: acute radiation syndrome, CNS delivery and sampling (intrathecal, intraventricular, intracerebral)